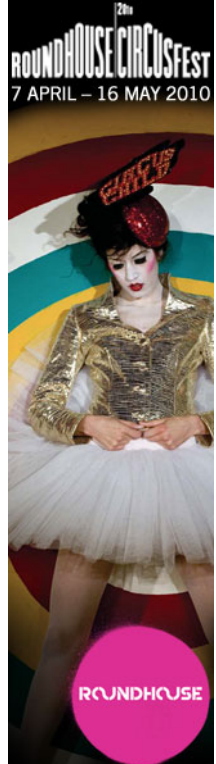


Member Login | FREE TICKETS - JOIN THE THEATRE CLUB

QUICK LINKS  Search



HOME | THEATRE CLUB | BUY THEATRE TICKETS | WHAT'S ON | DISCUSSION | NEWS, REVIEWS & FEATURES | VIDEOS & PODCASTS | AWARDS SITE | [t](#) [f](#) [s](#)  
NEWS | GOSSIP | REVIEWS | REVIEW ROUND-UPS | INTERVIEWS | FEATURES | PHOTOS | REGIONS



### George's Marvellous Medicine (tour - Chelmsford)

Venue: Civic Theatre

Where: Chelmsford

Date Reviewed: 14 April 2010

WOS Rating: ★★★★★

Reader Reviews: [View and add to our user reviews](#)

0 tweets

JOIN OUR MAILING LIST

Why join yet another mailing list?  
Because, if you visit the theatre more than once or twice a year, we could save you hundreds of pounds.

Join Now

Children are much better at memorising passages from favourite books than adults. Take the long, long list of concoctions which go to make up George's marvellous medicine in the [Roald Dahl](#) book of the same name, cleverly adapted for the stage by [David Wood](#). When it comes to making up a fresh batch in the second act of [Phil Clark](#)'s production for the Birmingham Stage Company, the audience knows exactly which peculiar additive is missing. No wonder there's a "don't try this at home" warning at the end of the show and in the souvenir programme.

The farmhouse set by [Jacqueline Trousdale](#) has just the right mixture of realism and distortion and the special effects and puppetry are very well handled. Farmyard noises greet the audience as it arrives and there's an obligato of squelches, plops, cackles, grunts, bellows and snores as the action progresses; sound design is by [Tom Lishman](#). [Alison Fitzjohn](#) and [Tom Woodman](#) are a thoroughly credible Mum and Dad and root the fantasy of George's wish-fulfilment in down-to-earth reality with just a subtle hint of caricature to enliven it.

George was played by understudy [[Jason O'brien](#)] at the performance I saw. He makes him a gangly baseball-capped youth with all the frustrations inherent in being a sub-teenager on a busy working farm. Enter Grandma (his mother's widowed parent), and she's the relation from hell as far as having her as an uninvited house-guest is concerned. [Erika Poole](#) has great fun with her nastiness as she demands her own way, drinks all Dad's gin, tries to take over the house (including turfing George out of his own room) and really deserves all that she gets. Which, of course, is plenty.

Puppet master [Roman Stefanski](#) peoples the farmyard (and on occasion the house itself) with a wondrous array of animals. There's a ferocious bull, a whole roost of chickens (including one enormous one, much to the audience's delight), piglets, a cow and at least one yapping dog. Grandma's vertical growth is particularly well handled with arm as well as leg extensions, collapsed to child-size at the end. Not perhaps a model of what country living is all about but, as far as theatre for children and their accompanying adults is concerned, an example of how to engage an audience's attention and keep it right to the end of the show. And beyond.

- by [Anne Morley-Priestman](#)

#### Related Content

★ [George's Marvellous Medicine \(tour - Chelmsford\) reviews](#)

Discuss this story with other theatregoers

Sign-up for our RSS Feed

Join our mailing list

BOOKMARK

Write a Review

Give us your opinion on this production, give it a score (1 is low) and a comment

Score: 3 - ok

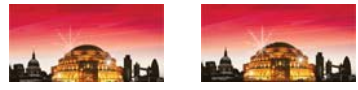
Comment:

Name:   
Required, will appear on website

Email:




reelkandi.tv  
CHOOSE VIDEO...  
SUN HAIR  
MAMMA MIA!  
BILLY ELLIOT BILLY ELLIOT



FEATURED THEATRES  
Find out more about these great theatres

- [The Arcola Theatre](#)
- [Donmar Warehouse](#)
- [The Southwark Playhouse](#)
- [The Rose Theatre, Kingston](#)
- [Royal Shakespeare Company](#)
- [The Hampstead Theatre](#)
- [Shakespeare's Globe](#)

Required, will not appear on website

Confirm:  Please type in 

Please enter this number > SEVENTY-EIGHT < Just the two digits only, without any spaces.

Friends Email:  Your Email:  Comment:

© Watsonstage 1996-2009

**SITE MAP**

**Tickets**

- [Buy London Theatre Tickets](#)
- [Theatre Ticket & Meal Deals](#)
- [Discount London Theatre Tickets and Promotions](#)
- [London Theatre Ticket Hotel Breaks](#)

**Content**

- [Theatre News](#)
- [Theatre Reviews](#)
- [Interviews & Features](#)
- [Theatre Videos](#)
- [Opera News & Reviews](#)
- [Off-West End News & Reviews](#)
- [Regional Theatre News & Reviews](#)
- [Watsonstage.com Awards](#)
- [Meet the Editorial Team](#)

**Community**

- [Discussion board](#)
- [Community calendar](#)
- [Theatre jobs](#)
- [Theatre blogs](#)

**Book by Phone:**

**Watsonstage.com Theatre Club**

- [Join the Club](#)
- [Log in](#)
- [Current Club benefits](#)
- [How to get free theatre tickets](#)
- [Group Outings](#)
- [What's On Stage Magazine](#)

**Mailing Lists**

- [Newsletter - weekly theatre news](#)
- [Special Offers - discount theatre tickets direct to your inbox](#)

**Information Services**

- [What's On - national theatre listings database](#)
- [London theatre map](#)
- [A-Z of London Theatres](#)
- [A-Z of London Theatre Shows](#)
- [London Theatre Show openings & closings](#)
- [FAQ](#)
- [Work for us - current vacancies](#)

**Marketing Services:**

- [Website design](#)
- [Email marketing & CRM services](#)
- [Content feeds](#)

**London Theatre Tickets: 0845 372 1950**

**COMPANY INFORMATION**

Watsonstage.com - Discount London theatre tickets, theatre news and reviews, Theatre videos, Theatre discussion, National Theatre Listings. Covering London's West End, all of Theatreland and all UK theatre. The best for London Theatre Ticket Discounts.

**Products**

- [Watsonstage.com](#)
- [What's On Stage Magazine](#)
- [Watsonstage.com Awards](#)
- [Watsonstage.com Theatre Club](#)
- [Testimonials](#)
- [Contact us](#)
- [Advertise with us](#)



**Outings & Club: 020 7317 9100**